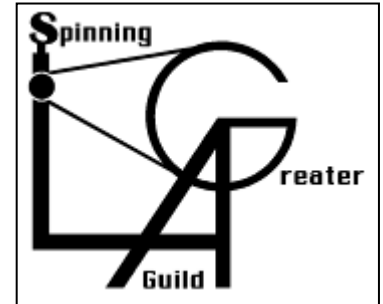


---

Volume 28 No. 11 November 2013

Website: [www.glasg.org](http://www.glasg.org)  
RAVELRY Group: [www.ravelry.com/groups/glasg](http://www.ravelry.com/groups/glasg)  
Yahoo Group: <http://groups.yahoo.com/group/GLASG>



### **2013 MEETINGS**

January 26	February 23	March 23
April 27	May 25	June 22
July 27	August 24	September 28
October 26	<b>November 23</b>	December 28

---

### **IN THIS ISSUE**

- **November 23**, Margaret Trousdale--Angora Rabbit
- **Elections for 2014**
- **December 28 Holiday Party**
- **2014 Programs: Novice & Expert**
- **Events and Outreach**
- **October 26 Meeting Recap**
- **A Trip to Rhinebeck**
- **Member Advertisements**
- **Minutes of October Meeting**
- **Membership Renewal**

#### **November 23 Program Margaret Trousdale--Angora Rabbit**

Feel luxurious soft angora at the November 23rd meeting. Please bring a spinning wheel that has the lightest tension. You may bring your own "raw" angora or purchase from The Yarn Marm for \$8 (cut) or \$9 (plucked) per ounce. A limited amount of colored and commercially carded will be available. The hand out, "How to Spin Angora", will be offered to all present. Samples of raw and spun will be on display. The last portion of the workshop is a demonstration on how to finish or full angora yarn. The Yarn Marm has been spinning since 2010. Her first teachers were Joe of Denwar Studios in Costa Mesa and Lexi Boeger at Camp Pluckyfluff. Her blog, The Yarn Marm, was started 2011 and now has over 63,000 views. She's a retired public school teacher and is currently an instructor with kid's college classes part time. She's honored to share her joy of angora with GLASG.

#### **Elections for 2014 GLASG Board**

Elections will be held at the November meeting. The following members have stepped forward to fill next year's positions. Please vote at the next meeting.

##### **2014 GLASG Board Slate**

- a. President- Jan Larson
- b. Vice President- Nan O'Donald
- c. Secretary- Luisa Bottari

Members at Large: Sonya Molho, Andy Mordoh, Leslie Rodier, Tracy Chu

The 2013 Holiday Party will be on December 28 at our usual meeting place.

---

## 2014 Programs & Workshops Novice & Expert

- JANUARY- Combing/Carding presented by Ruth Northrup. An in depth demo on how fiber and prep choice sets us up for drafting style and the finished yarn we want. Guild equipment will be set up for practice after demo. Please bring fibers!!!
  - FEBRUARY- Woolen Spinning presented by Lo-an Nguyen. Explanation/exploration of woolen preparation, drafting techniques, wheel adjustments, fiber choice to optimum results.
  - MARCH- in advance of K9 Action Sports shearing day; Fleece selection for quality/usage, fleece folding, fleece storage until ready to process. **PRESENTER NEEDED** Please contact Jen Foti/JFo
  - APRIL- Small batch fiber processing- traditional scouring and the cold water method; separating a fleece into sections for quality/usage **PRESENTER NEEDED** Please contact Jen Foti/JFo
  - MAY- Stephenie Gaustad Cotton focused Workshops 'From Field to Fiber'. Details to be announced asap.
  - JUNE- Guild Challenge: skeining/tagging for entry, skein collection for mass drop off to Pomona by Jen Foti, speed spinning practice for contest. Info to be posted/announced @ January meeting
  - JULY- Ercil Wroth will present on her trip to Cuzco, Peru to Tinkuy de Tejedores: A Gathering of Weavers. Natural dyeing, cultural knitting/weaving/spinning.
  - AUGUST- Beth Smith Breed Study Workshops. Detail announced asap.
  - SEPTEMBER- Dye Day @ Gwen Powell's. Gwen will lead a guided exploration on natural dyeing to include indigo at her home. Details announced asap.
  - OCTOBER- Homespun Handknit Sweater design led by Sonya Malho.
  - NOVEMBER- Blending the Colorwheel on handcards presented by Myrna Burton.
  - DECEMBER- Holiday Potluck Party, Distaff Dressing Contest, gift exchange, etc. Details announced asap.
- 

## EVENTS

- **February 13-16, 2014** 2014 MADRONA FIBER ARTS WINTER RETREAT-- Hotel Murano, Tacoma, Washington <http://www.madronafiberarts.com>.
  - **February 15-17, 2014** Studio 66—Cotton Dyeing and Spinning Workshop
  - **May 3-4, 2014** Maryland Sheep and Wool, <http://www.sheepandwool.org> Maryland Sheep & Wool Festival.
  - **April 25-27, 2014** Conference of Northern California Handweavers (CNCH) 2014, Branch Out With Fibers, <http://www.cnch.org/>
  - **June 20-22, 2014** Black Sheep Gathering, at the Lane County Fairgrounds in Eugene, OR,. This is a one of the best West Coast shows with lots of vendors and lots of affordable classes.
  - **July 11-Aug 10, 2014** Orange County Fair
  - **July 30-Aug 10, 2014** Ventura County Fair
  - **October 4-5, 2014** Taos Wool Festival in Taos, New Mexico,.
-

## October 2013 Program

Mikki Lawrence presented a program on DIY wheel, the Dodec spinning wheel. Mikki Lawrence built a handmade spinning wheel, modified from plans from a 2012 Spin-Off Magazine article. Mikki's wheel included some upgraded hardware, plus a convenient carrying handle, so her material costs were higher. The plans require angled cuts on the wood segments that construct the wheel itself, which is probably the most difficult part of the plans. She demonstrated the use of this light-weight, quill style wheel and a limited number of Kits with all the pre-cut parts to build a wheel were available to purchase.



Show and Tell, October 2013 Meeting



Anna' Rainbow Vest,  
Mikki's Mystery KAL,  
Karen's Blending Board Hat,  
Anna's Weft Faced Scarf



## Rhinebeck 2013

Jen Foti and I along with two of our friends headed for the New York State, Sheep and Wool Festival affectionately known as "Rhinebeck".

We arrived on Wednesday before the show and toured the surrounding communities including Saugerties, Woodstock, and Hyde Park where we had a delightful breakfast of Pastries at the Culinary Institute.



While Jen and our friend Deborah had classes on Thursday, Suji and I explored the countryside stumbling upon an old Mansion in which we were allowed to explore the grounds. The house had belonged to the mistress of Teddy Roosevelt and her family. It took 6 Million and 10 years to restore the house. Definitely a sight to behold. Thursday evening was spent visiting former guild member Jamie Badore and meeting his sister(s) who work for Hudson Valley Sheep and Wool in which they were having an 'Open House' in addition to vending at Rhinebeck.

Friday was spent going on a mini yarn crawl in which we visited two wonderful shops, one literally in the middle of the woods! We also visited the largest 'Kaleidoscope' in the world!

Saturday was the opening of the Festival. In that Jen and Deborah had taken classes, they were able to get in before the gates opened to the general public, as did I as I wanted to see about taking a class. To be inside before the crowds come is very surreal to say the least. By the end of the first day, over 45,000 people had walked through the gates. We had also attended the Ravlery Meet-up which was quite overwhelming in itself. Several hundred people dotted the small hill, ALL Ravelry members!!!

Sunday was a much quieter day. You could actually move around and get into barns where you could not have the day before. A GREAT show overall but not the place to be if you have any anxiety or social phobias! I love the fall colors, change of seasons, and being around all of the sheep, goats, alpacas, and llamas. I will definitely be back!



Jan

## GLASG.ORG

We now have a section on the website for members' spinning stories. If you would like to post your experiences with spinning, send pictures and your story to [webmaster@glasg.org](mailto:webmaster@glasg.org).

The GLASG website is updated at least every month. We would like to have more input into the website. Please send [webmaster@glasg.org](mailto:webmaster@glasg.org) pictures and articles that are labeled. If the pictures have people, please send a note that the people in the picture agree to have their picture put on the internet. We will take your word on this. Please include either a caption to go along with any pictures.

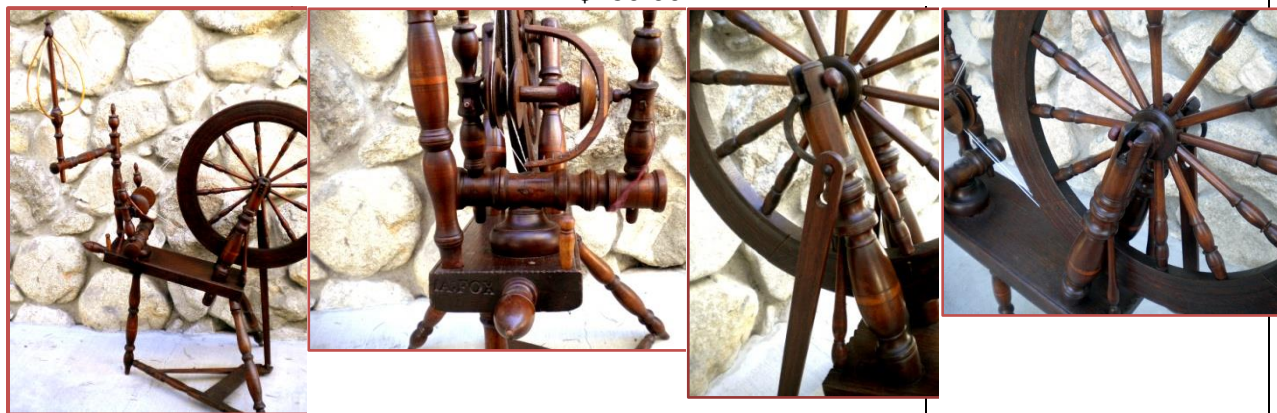
If you have uploaded any spinning related videos to YouTube, please forward the information to [webmaster@glasg.org](mailto:webmaster@glasg.org). We will list the videos under resources. Thank you.

Guild members may place a "for sale" advertisement in the newsletter. Email [editor@glasg.org](mailto:editor@glasg.org) your information for the ad. These ads are not for commercial ventures.

### FULLY RESTORED "JACOB FOX (FUCHS)" SPINNING WHEEL

*"We have the mark I A FOX on our list of spinning wheel makers. It was for a wheel maker named Jacob Fox [or Fuchs in German] in Berks County, Penn. who worked from 1808 to 1862."* (Florence Feldman-Wood, The Spinning Wheel Sleuth, <http://www.spwhsl.com/>)

\$250.00

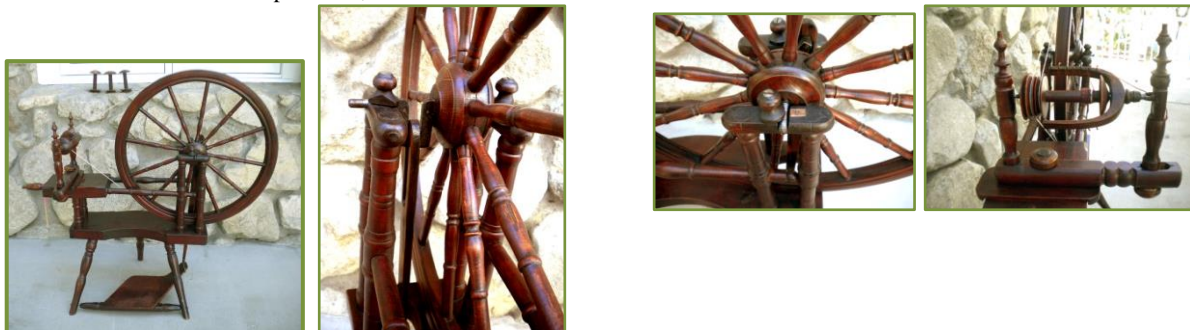


Wheel Dia. 20". Overall, w/o distaff: 31"W x 37"H x 23"D  
This wheel spins well, comes with distaff, three bobbins and an orifice hook.  
MICHAEL A NEIL, 1.818.257.4523, [artfulm@yahoo.com](mailto:artfulm@yahoo.com)

### FULLY RESTORED ANTIQUE DOUBLE BENCH FLAX WHEEL

\$250.00

This wheel spins well, includes four bobbins. Wheel Dia. 22". Overall: 36"W x 34"H x 17"D.



Wheel Dia. 20". Overall, w/o distaff: 31"W x 37"H x 23"D  
This wheel spins well, comes with distaff, three bobbins and an orifice hook.  
MICHAEL A NEIL, 1.818.257.4523, [artfulm@yahoo.com](mailto:artfulm@yahoo.com)

# **GLASG Meeting**

## **Minutes October 26, 2013**

### **Call to Order**

Meeting called to order at 10:16 a.m.

### **Minutes**

Minutes from 9/1/2013, Motion was made, carried, and minutes were approved..

### **Introduction/RollCall**

Roll Call - 25 members; 3 visitors. Introductions were made to include name, Ravlery name, location, years spinning, and current project.

### **Treasury Report**

Our total budget as of April 28, 2012 is \$6,958.88.

### **Committee Report**

#### **Program**

- Mikki Lawrence to be presenting 'The Rodek' wheel today.
- November Program will be presented by Margaret Trousdale on prepping and spinning Angora rabbit fur.

#### **Events and Outreach**

- WEFF 11/3
- Torrance Community Center 10-4 \$7 Entrance Fee
- Freeway Lace Guild 11/2
- Torrance Community Center
- Studio 66 Cotton Workshop, February

**Library-** 5 new titles were recommended to add.

**Raffle-** Tickets 2/\$1. Reminder to all, that if you win, to bring an item for the next Monty's raffle table.

#### **Outreach:**

- Nothing to report

### **Equipment Report**

Borrowing guild's equipment is free of charge for members; however, there is a \$25 loan for the equipment. Borrower must bring back the equipment to the following meeting at 9 a.m., so that members can use the equipment during the meeting and other can see what's available.

### **Old Business**

- There was no Old Business to report.

### **New Business**

- b. 2014 GLASG Board Slate
  - a. President- Jan Larson
  - b. Vice President- Nan O'Donald
  - c. Secretary- Luisa
- c. Members at Large: Sonya Molho, Andy Mordoh, Leslie Rodier, Tracy Chu

### **Announcements**

- The Church is hosting a Fall Boutique on 11/16 from 8-2pm Griffith Park Senior Center Boutique 11/15 2-5pm Knitting classes taught by Eileen at same location.
- Cone yarn offered to members in exchange for washable Acrylic yarn in worsted or DK weight and/ or a small cash donation to go towards supplies for the senior center.
- Rhinebeck and Vista Fiber Fiesta Recap

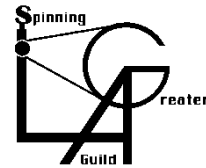
**Show and Tell**

- Mikki Lawrence presented a Mystery Shawl KAL hosted by Ravelry and designed by Steven West
- Anna Zinmeister shared a scarf based on Sara Lamb's Spin to Weave that was "warp faced"
- Anna Petrova shared a vest she designed and knitted with yarn she had purchased in Estonia in which she embellished with a felted collar and needle felted accents.
- Jan Larson shared her Supported Spindle purchases at Rhinebeck in addition to a Gradient Fiber that she had purchased.

**Meeting Adjourned, 11:36 a.m.**



Greater Los Angeles Spinning Guild  
2014  
MEMBERSHIP APPLICATION / RENEWAL



**\$30** for one year

Please complete the form below and submit with your check payable to **GLASG** by hand to any GLASG board member, or send to:

**GLASG Membership Committee**  
**P.O. Box 64454**  
**Los Angeles, CA 90064**

You may also make dues payment by Paypal by following these steps:

- Log on to your own Paypal account
- Click on "send money"
- Enter "membership@glasg.org" as recipient and "Service" from the "Payment" tab as the transaction type. Do not check "personal transfer" or anything from that tab.
- Enter \$30.00 as the amount, and enter your name in the "Comments" section so we know without a doubt who is renewing their membership.

Mail in or hand in a completed copy of this form. *The information below will be made available to members in our Member Roster, published in a secure area of our website. If you wish any item to be omitted from the published Member Roster, please check the box at the left of the item.*

**Omit from  
Published  
Roster**

Name: \_\_\_\_\_

Address: \_\_\_\_\_  
\_\_\_\_\_

City: \_\_\_\_\_ State: \_\_\_\_\_ ZIP: \_\_\_\_\_

Home Phone: \_\_\_\_\_

Work Phone: \_\_\_\_\_

Cell Phone: \_\_\_\_\_

Email Address: \_\_\_\_\_

*Renewal:*  Please correct the Roster as shown above.

*Roster Correction Only:* My dues are paid through 2013, just correct the Roster as shown above.

**Membership Committee use only:**

Date Received: \_\_\_\_\_ Date dues given \_\_\_\_\_  
to Treasurer: \_\_\_\_\_

Check No.: \_\_\_\_\_ Check Amount: \_\_\_\_\_

This membership term begins (date): \_\_\_\_\_ Ends: 12/31/ \_\_\_\_\_